

## **Sure-Clamp Access**

### **Round: Unlined**

### **Radius Elbow**

#### **SPECIFICATIONS**

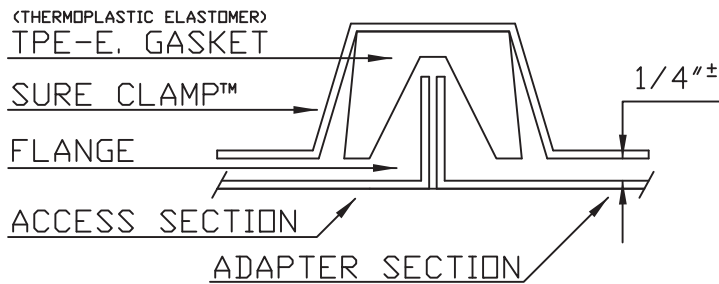
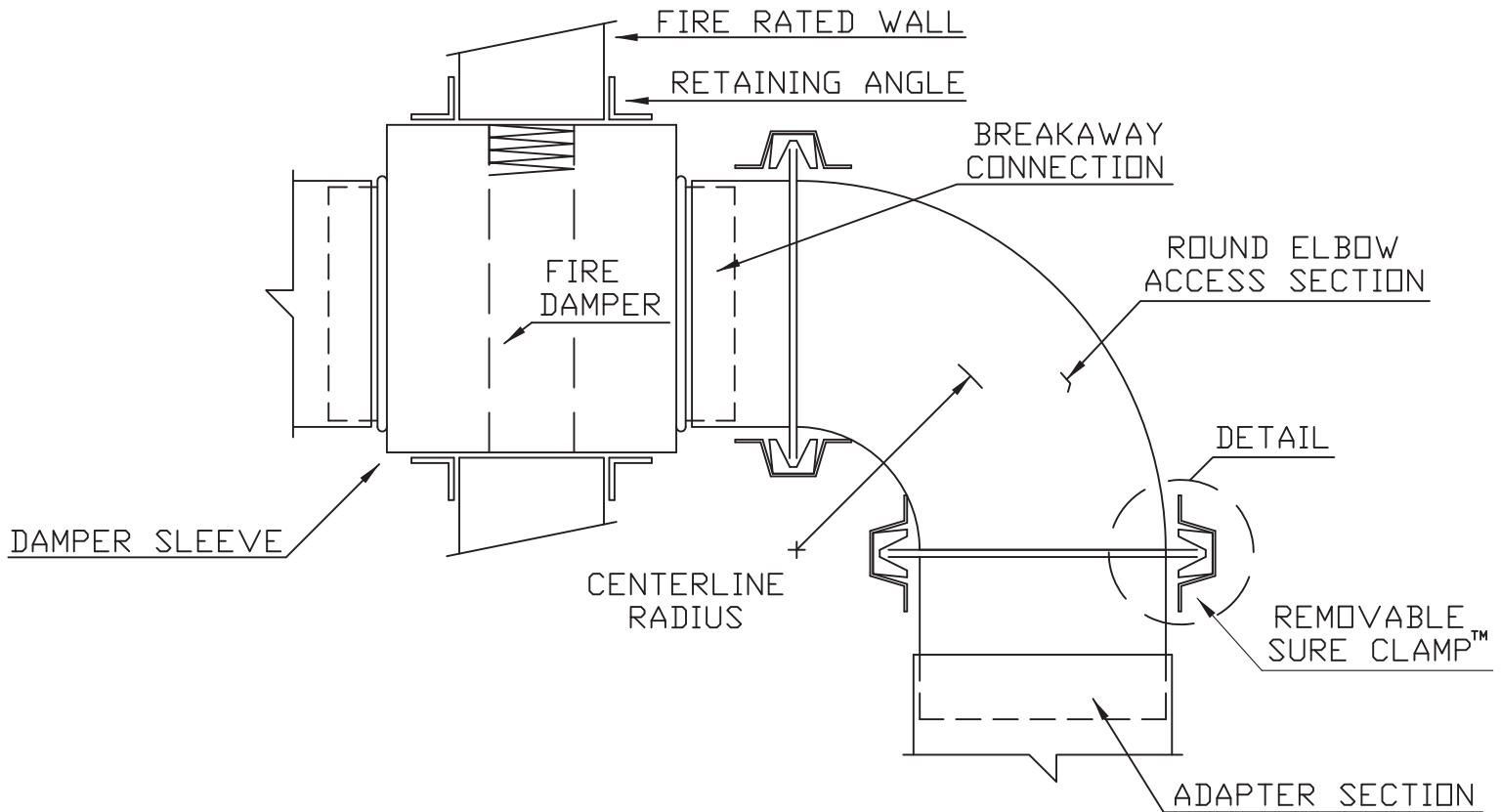
- A. **General Description:** The removable ductwork section features a clamp connection for easy installation and removal. The gasket clamps ensures a secure and tight connection, reducing air leakage and improving overall system performance. When it's time for fire damper inspection the ductwork section can be easily removed and replace without the need for specialized tools, this designed is practical, efficient and takes 50% less time to make mandatory fire damper inspections.
- B. **Allowable Leakage:** 1/2 CFM per 100 square ft. of ductwork surface area.
- C. **Size:** 18" maximum diameter
- D. **Material:** Galvanized ASTM A527
- E. **Liner:** N/A
- F. **Flange Connection:** 90 degree continuous machine formed flange.
- G. **Seams:** ( RL-3 ) Lap and spot weld on 2" interval
- H. **Access Section:** 22 gauge 4" through 12" diameter and 20 gauge 13" through 18" diameter.
- I. **Clamps:** 20 gauge electro plated steel and adjustable tee latch. Gasket profile forms to the inside of clamp and seals the outer edges of the ductwork flange.
- J. **Gasket:** Thermoplastic elastomer TPE-E Temp. resistance -140 to +176F
- K. **Seal Seams:** In accordance with SMACNA HVAC Duct Construction Standard - Metal and Flexible.
- L. **Installation:** The removable access section shall not be more than 4" away from the fire damper sleeve break away connection. Installing contractor to provide manufacturer with quantity and size for fabrication.
- M. **Manufacturer:**     Langdon, Inc.  
                              9865 Wayne Avenue  
                              Cincinnati, Ohio 45215  
                              Phone (513) 733-5955

# SURE • CLAMP™ ACCESS

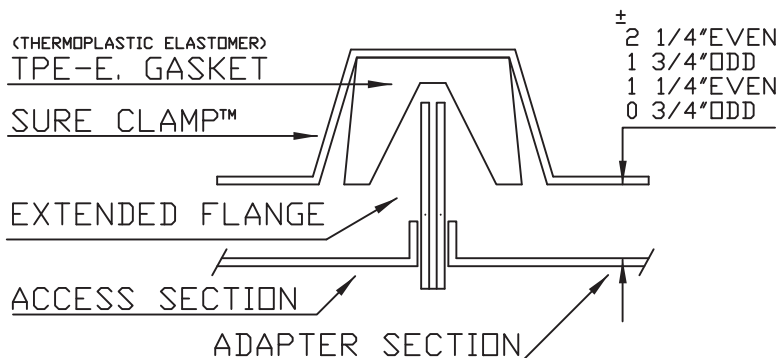
(PATENTED)

SURE CLAMP™ UNLINED  
DETAIL

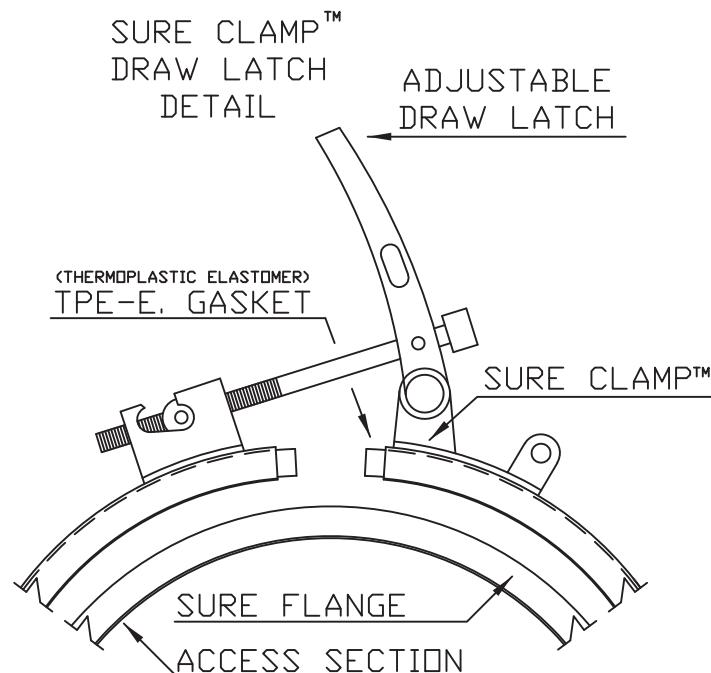
## DUCTWORK FITTING ACCESS



### STANDARD FLANGE



### EXTENDED FLANGE



[www.langdonsheetmetal.com](http://www.langdonsheetmetal.com)

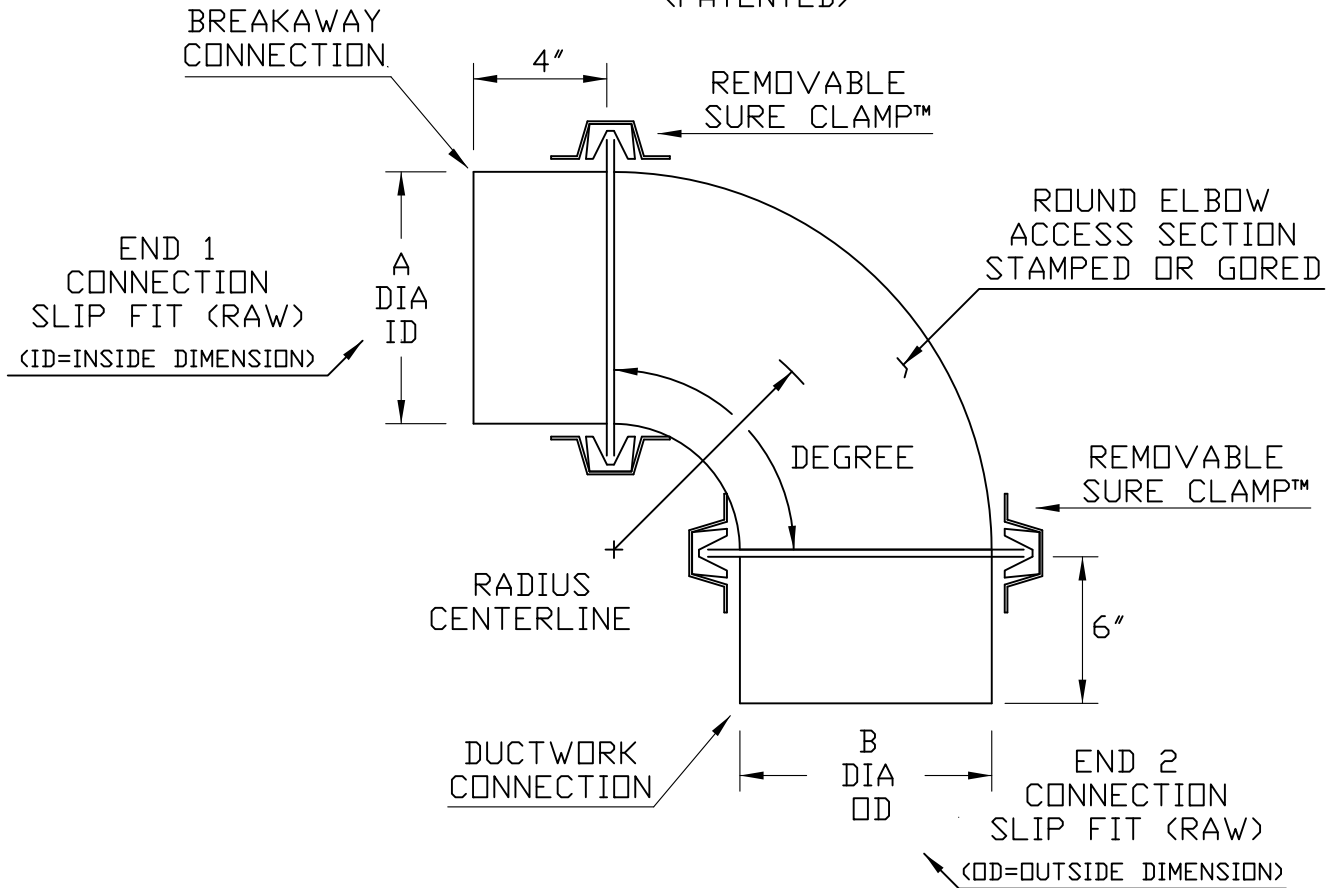
Cincinnati, Ohio. 45215  
The above mentioned product, is protected by patents and trade marks  
All Rights Reserved updated 4/12/2023

# ORDER FORM

## SURE • CLAMP™ ACCESS

(PATENTED)

SURE CLAMP UNLINED  
DETAIL



<u>TAG</u>	<u>QTY.</u>	<u>END 1</u> <u>(A)</u>	<u>END 2</u> <u>(B)</u>	<u>RADIUS</u> <u>CENTERLINE</u>	<u>DEGREE</u>
EXAMPLE	1	12"Ø ID	11.92"Ø OD	18"	90°
_____	_____	_____	_____	_____	_____
_____	_____	_____	_____	_____	_____
_____	_____	_____	_____	_____	_____
_____	_____	_____	_____	_____	_____
_____	_____	_____	_____	_____	_____
_____	_____	_____	_____	_____	_____
_____	_____	_____	_____	_____	_____
_____	_____	_____	_____	_____	_____
_____	_____	_____	_____	_____	_____

[www.langdonsheetmetal.com](http://www.langdonsheetmetal.com)